

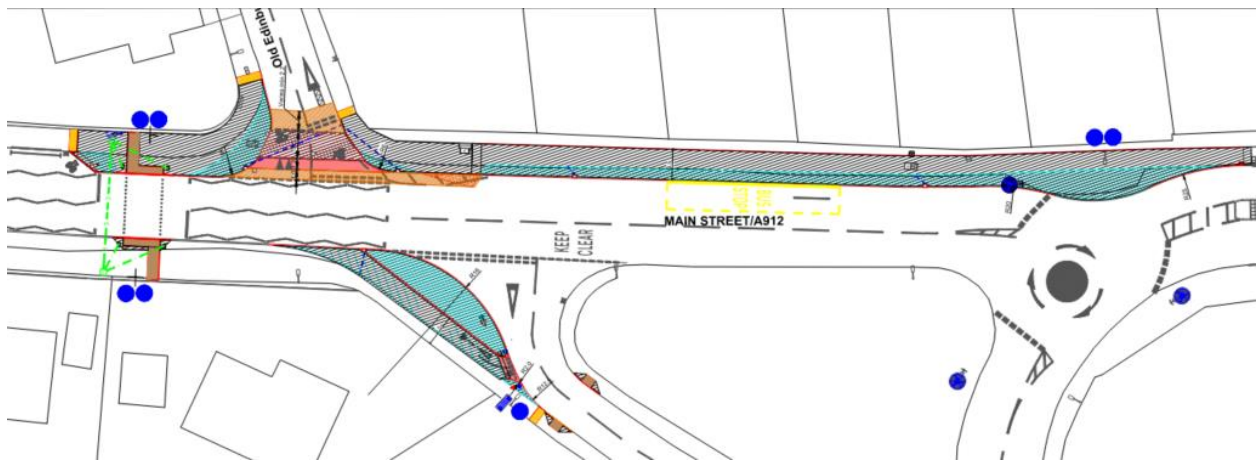
Newsletter 7: August 2023

Welcome to the 7th Newsletter for the Bridge of Earn to Newburgh Active Travel Project.

This update aims to inform stakeholders on a regular basis of the latest progress on the project.

Phase 1A Bridge of Earn: Progress Update

Construction work on the eastern side of Bridge of Earn commenced in January 2023 and was completed in May. Following some snagging issues with the surfacing adjacent to the pedestrian crossing and the cabling for an advisory sign the project has been operational over the summer. Contractors T & N Gilmartin of Cupar, Fife, did a fine job managing several staffing issues with minimal slippage.



The changes to traffic movements and vehicle priorities vs cyclists and path users are the key aspects of the project. By altering the infrastructure in this area all users of the space are required to slow down and take due notice of the priorities. The new layout has begun to work as drivers read the road correctly, become familiar with the changes and use the area as designed.

The improved footway with altered junctions, connects into the existing cycling infrastructure to the north and is now viewed as a strategic link from Perth & Kinross into Fife by Transport Scotland.

A historic issue adjacent to Wicks O' Baigle central island footway has become apparent. A Road Safety Audit Stage 3 is to be conducted this month which will then provide the data needed to adjust the footway width/positioning or kerb height in that location, therefore assisting large vehicle movements.

Phase 1B Community Woodland to Oudenarde Roundabout: Progress Update

Final designs continue to be with Transport Scotland for review, along with the outstanding boundary issue over the motorway slip roads and under the M90 flyover.

As noted previously, 100% funding is secured for this next phase of the project.

Phase 1C Baigle Straight

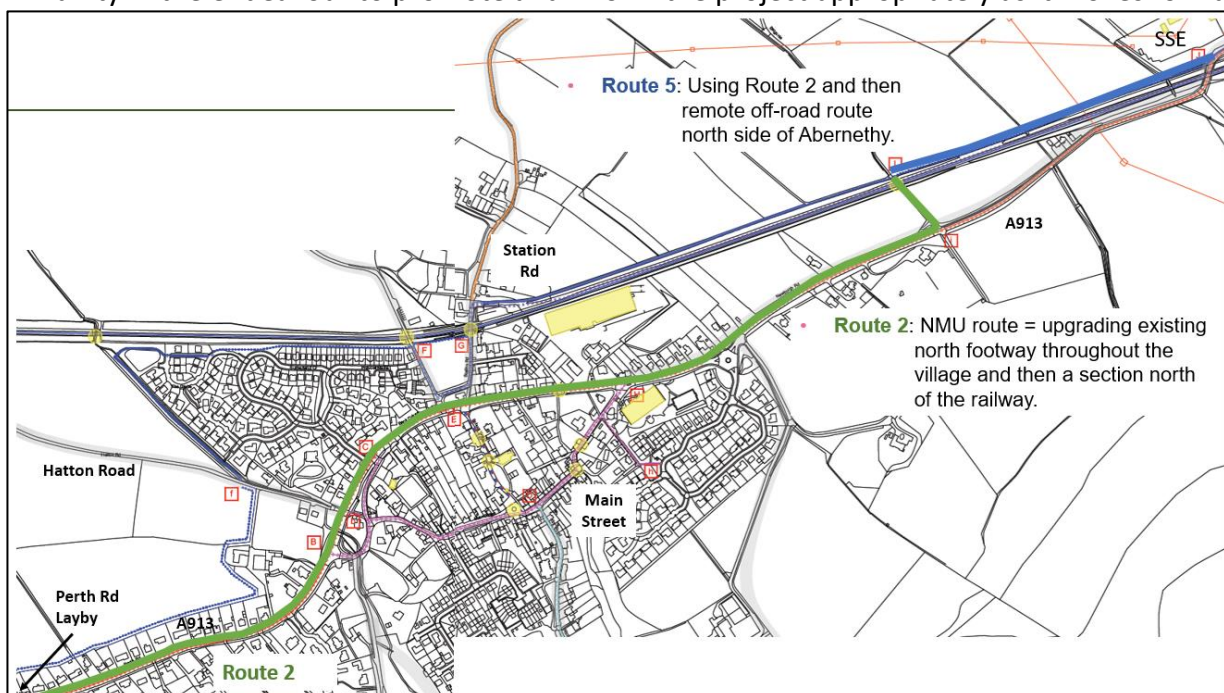
The designs for Phase 1C, along the Baigle Straight, A912 were submitted to PKC Planning department and have been awarded Planning Permission with conditions. One of these conditions involved investigating through a survey the health of the hedge. This has been completed and the results highlight the recommendation for a porous path surfacing material and root protection system.

Discussions with Transport Scotland and Sustrans are required to agree a way forward. From this, conversations with the landowners adjacent to the hedge will take place regarding the drainage plans.

Phase 2A Glenfoot to Jamesfield Junction via Abernethy

We were pleased to find a way to continue to work with the Community Council. With the appointment of a new Chair, and following a presentation given by TP&E Engineers and PKCT to Katie McAleese we now have the Community Council support for the project and the route identified to take forward to Detailed Design stage.

There is good support within the Abernethy community and the adjacent settlements for improved infrastructure in this area. We are greatly encouraged that this route is regarded as being of strategic importance to the Scottish Government. As a result, the project is continuing to work with the community in the endeavour to promote and inform the project appropriately as it moves forward.



Phase 2B – Jamesfield Junction to Newburgh

The project team met with the Land Agent for the Mugdrum Estate in the spring and discussed the project in a more involved manner, with a walk over survey. It was agreed at the site meeting that in addition to the preferred route to the north of the Mugdrum Estate wall, the route to the south of the A913 should be reconsidered, in light of Fife Council's favouring the road realignment option. This route was not previously progressed as it was not something that could be delivered within the available resources to Perth and Kinross Council. However, due to the potential of external funding and it being Fife Council's preferred option, this route is to be reassessed. Fife Council are to commence community consultation and TP&E are to commence surveying.

How you can help & further updates

More information can be found on www.pkct.org

Please contact us on info@pkct.org if there are any queries or facts that you require more information on.

If you would like to be more involved, please contact us at the above email.