

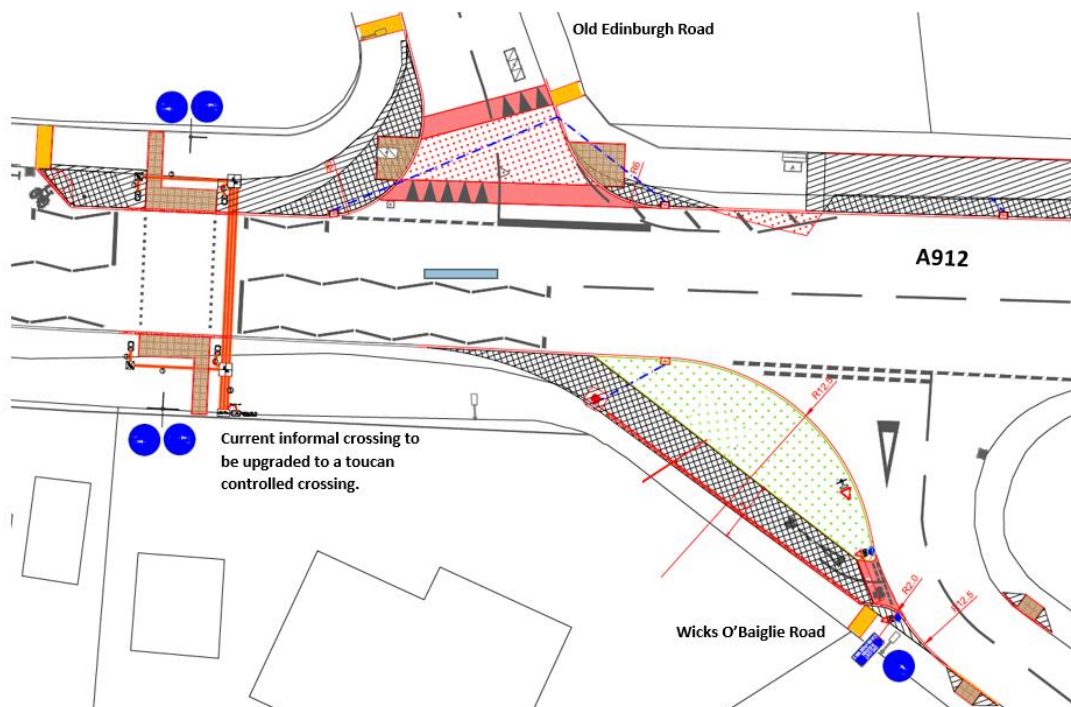
## Newsletter 3: May 2021

Welcome to the third Newsletter for the  
**Bridge of Earn to Newburgh Active Travel Project.**

**This update aims to inform stakeholders on a regular basis of the latest progress on the project.**

### **Phase 1 Section 1A Progress Update**

The raised table over the Old Edinburgh Road junction with the A912 has now been accepted by Traffic Services in PKC.



### **Next Steps for Phase 1 Section 1A**

The pedestrian and cyclist priority feature over the Old Edinburgh Road junction will now go for consultation under the Road Humps (Scotland) Regulations. This is where the Police, the Emergency Services and organisations representing local road users are contacted.

Construction of this section of works is now dependant on successful fundraising and the ambition is for this to take place in the autumn all going well.

### **Next Steps for Phase 1 Section 1B**

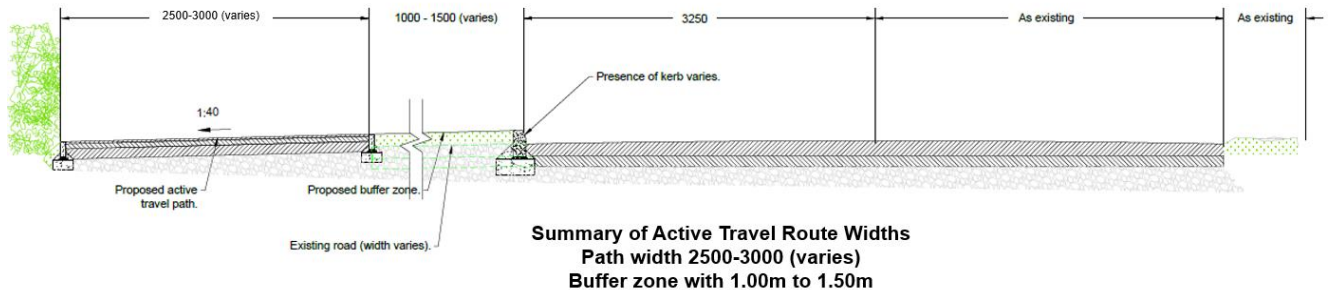
The project is designing in the signage requirements for the slip roads to and from the M90 motorway. On completion of this outstanding boundary issue over the sliproads and under the M90 flyover the design changes will be sent to Transport Scotland for review.

### **Phase 1 Section 2 Baiglie Straight**

The current proposals for Baiglie Straight are under review with Traffic Services and the Road Safety Team in PKC. On acceptance of the proposals the design can be communicated fully. The proposal is for the centreline of the A912 to remain where it is and the north lane to be set at a constant width of 3.25m.

This rationalises the existing situation where around 90% of the north lane already sits at a width of 3.25m or less.

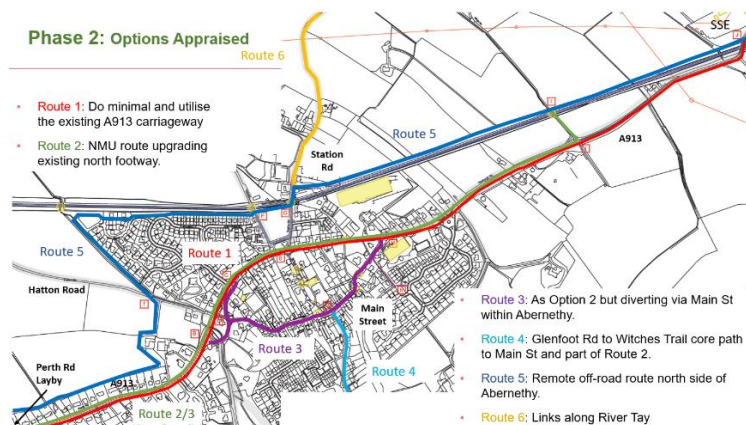
**Cross section of proposed outline design through Baiglie Straight looking towards Aberargie.**



The design going forward will embrace all road safety legislation required on A class arterial roads.

## Phase 2

The **wider consultation of the options appraisal report** has commenced and can be found on the PKCT website under 'Bridge of Earn to Newburgh Active Travel Route' <https://www.pkct.org/options-appraisal-for-bridge-of-earn-to-newburgh-active-travel-route-phase-2-consultation>



Please visit the website above and give us your views on the routes in and around Abernethy as part of the Phase 2 proposals for this project.

The consultation finishes on 7<sup>th</sup> June 2021.

## Phase 3 – no further update

### Recap on the Project Geographical Breakdown

The project has been split into 3 phases and the delivery is to be rolled out beginning from the western end in Bridge of Earn heading eastwards:

- Phase 1: Sections 1A and 1B: Bridge of Earn near Old Edinburgh Road to just west of Oudenarde Roundabout.
- Phase 1: Section 2: Baiglie Straight down to Aberargie Roundabout.
- Phase 2: Glenfoot through Abernethy to Jamesfield just over the railway line.
- Phase 3: Jamesfield into Newburgh.

Regular updates and more info can be found on [www.pkct.org](http://www.pkct.org)

## How you can help & further updates

Please contact us on [info@pkct.org](mailto:info@pkct.org) if there are any queries or facts that you require more information on.

We will be looking to find further ways to communicate the project details depending on the lifting of Covid-19 Restrictions.